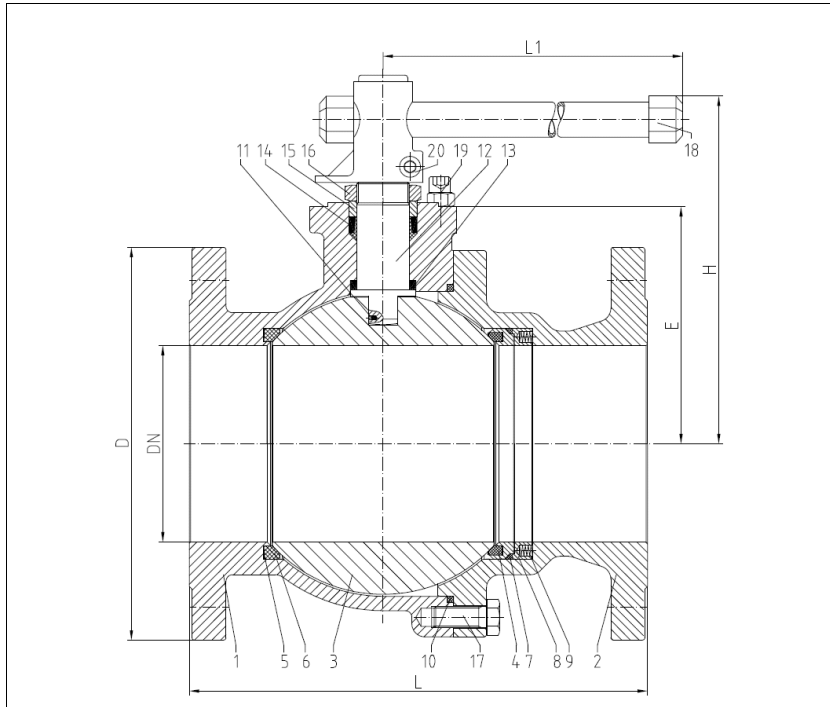


# BALL VALVES INTEC

K224, DN125 - DN200, PN10/16

floating ball, PEEK seated,  
single side spring loaded seat ring



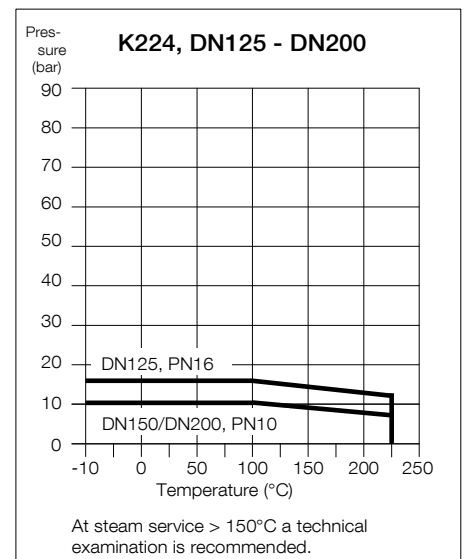
**Flanged ball valve**  
**full bore**  
**face to face acc. to EN 558, GR. 27**  
**flanges acc. to EN 1092**

**Specification:**

Two-piece ball valve with flanges acc. to EN 1092, face to face dimensions acc. to EN 558, GR.27, full bore, blow-out-proof sem, body material stainless steel (1.4408) or carbon steel (1.0619), antistatic device, free of non ferrous metals, seats full chambered, single side spring loaded seat ring, stem packing Graphite/KFGN/KFAM cone ring system dynamic loaded adjustable, top flange DIN EN ISO 5211, approved by PED, certified acc. to GERMAN clean air act VDI 2440, with lever.

Marking: INTEC K224

No.	Part	Material	Material
<b>Standard design</b>			
1	body	1.0619	1.4408
2	cap	1.0619	1.4408
3	ball	1.4408	
4	seat (flanged)	PEEK/ Graphite/ 1.4571 - 1.4404 PEEK mod./ Graphite/ 1.4571 - 1.4404	
5	seat back seal	Graphite	
6	seat	PEEK / PEEK mod.	
7	seat seal	KF	
8	follower ring	1.4571/1.4404	
9	spiral spring	1.4401	
10	body seal	KF	
11	antistatic element	1.4401/1.4571/1.4404	
12	stem	1.4462	
13	below seal	KFGN/Graphite	
14	upper seal	KFAM/Graphite	
15	upper stem bearing	PEEK	
16	hex. nut self-locking	A2/1.4301	
17	hex. screw	A4-70	
18	lever	1.4408/1.4308/steel zincplated	
19	stopper	A2	
20	allen screw	A2-70	
<b>Fire-Safe design</b>			
7	seat seal	Graphite	
9	spiral spring	Inconel X750	
10	combined body seal	KF-Graphite	
12	Fire-Safe seal	Graphite	
	ring	1.4571/1.4404	
	thrust washer	PEEK	



**Ordering example:**  
**INTEC K224, DN150, PN10, GR.27,**  
**1.4408, Fire-Safe**

\* Necessary torque measured with treated water at Δ P acc. pressure class and room temperature.

\*\* gearbox recommended

**Dimensions**

DN mm	PN	dimensions (mm)					top flange ISO	torque Nm*	ca. weight kg
		H	L1	L	D	E			
125	16	263	700	325	250	164	F12	475**	56
150	10	265	700	350	285	160	F12	362**	80
200	10	340	1000	400	340	225	F14	558**	152